



# PORTFOLIO

Educator · Production Designer · Set Decorator · Artist  
[www.sineadclancy.com](http://www.sineadclancy.com) | [shinaidy@gmail.com](mailto:shinaidy@gmail.com) | 323-363-9665  
[@spacesbysinead](https://www.instagram.com/spacesbysinead)

My portfolio includes original character development from Reilly's Life, where I created and refined characters through a clear, step-by-step process focused on simplicity, expression, and readability for young audiences. It also shows how I translate that same process into teaching, breaking complex ideas into achievable steps so students can succeed quickly and build confidence.

I've included a case study of a student, Katie, who developed a strong interest in anime. Over time, I guided her from early drawings into more refined work using markers and paint pens by simplifying the structure of character design and building her skills progressively. This reflects how I approach teaching: meeting students where they are, keeping the process engaging, and helping them see what they are capable of.

Across all of the work, my focus is the same, making drawing feel fun, accessible, and achievable while maintaining strong design fundamentals. I'm very comfortable demonstrating live, adapting to different skill levels, and keeping students engaged and excited throughout the process.

SINEAD CLANCY



Illustration for Wrong way home | Reillys life

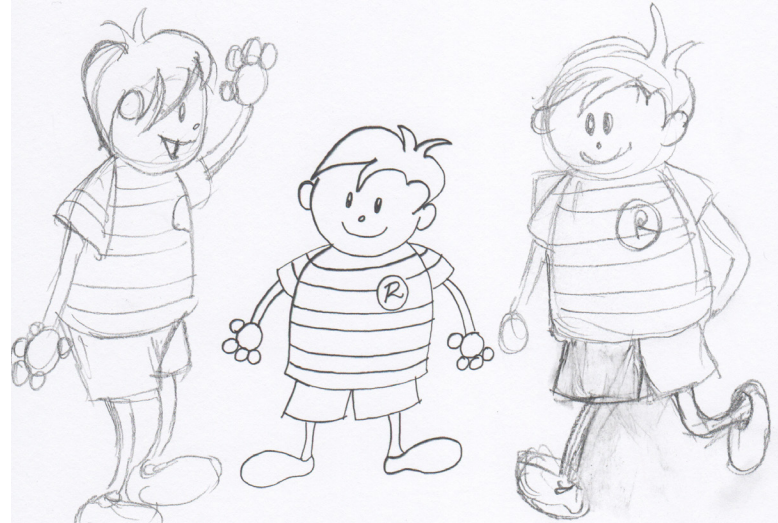
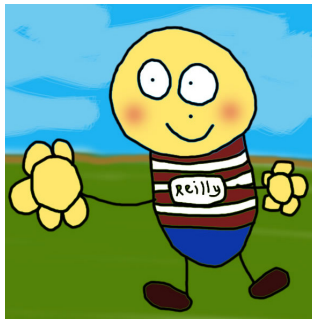


What began as a simple hand drawing by my son evolved into a fully realized character through an iterative design process. Reilly's design was developed through a series of studies that refined his proportions, expression, and visual language, while staying true to the authenticity of his original marks. The final character embraces simplicity and clarity, creating a gentle, expressive design that is both deeply personal and instantly readable for young audiences.

Reilly as a finalized drawing

# The evolution of Reilly

My development of Reilly



First pass based on my sons drawing

Color Ideas



Rob Silva's initial concept,



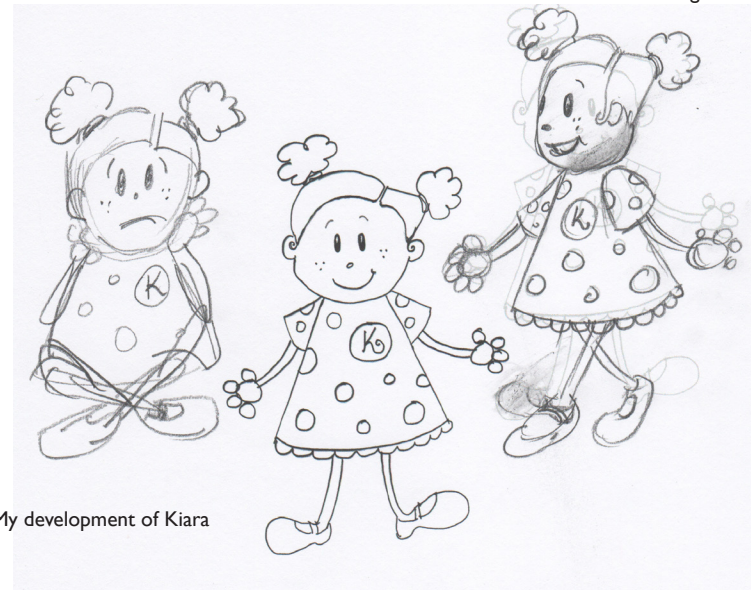


Kiara's design was shaped through multiple studies that explored proportion, expression, and color. Research informed key adjustments, including reducing the size of the eyes to create a softer, less threatening presence for young audiences. The final result is a character that feels playful, expressive, and easy for the audiences to connect with.



Kiara as a finalized drawing

# The evolution of Kiara



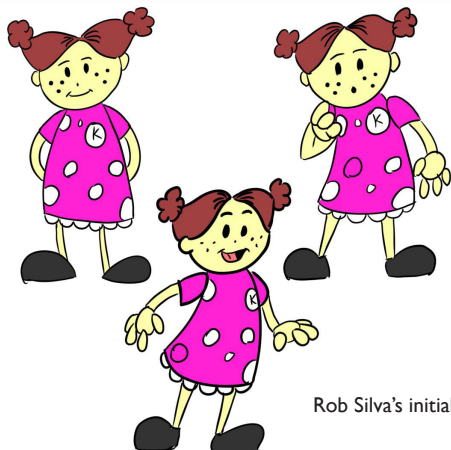
My development of Kiara



#F46888 #8A562E #F33A65 #A6694D #F37F72

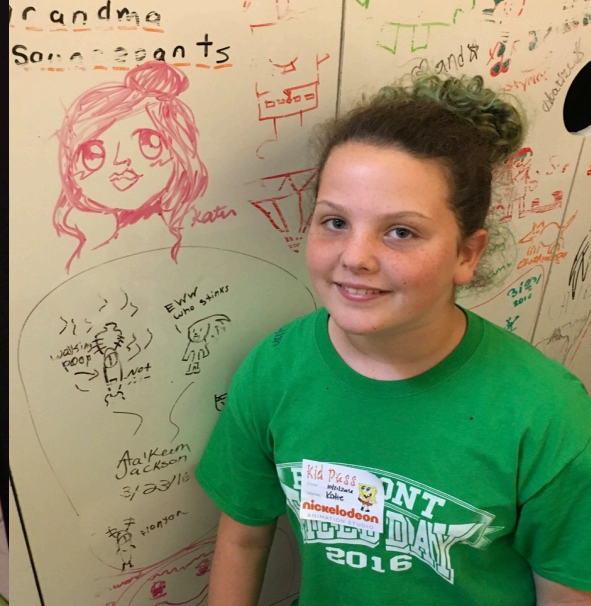
First pass based on my sons drawing

Color Ideas



Rob Silva's initial concept,



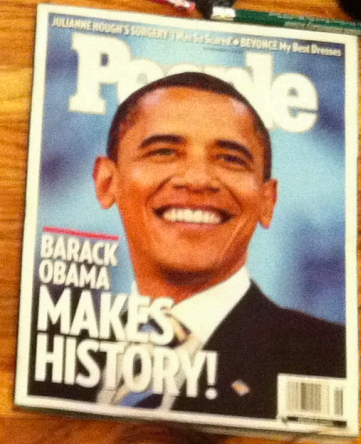


## Student Evolution

Katie developed a love of anime at a young age, and over several years I guided her through a structured progression of drawing techniques to build both skill and confidence. Beginning with simple observational drawings and paint-based work, we gradually introduced more advanced tools such as markers and paint pens, allowing her to explore line quality, color, and character expression.

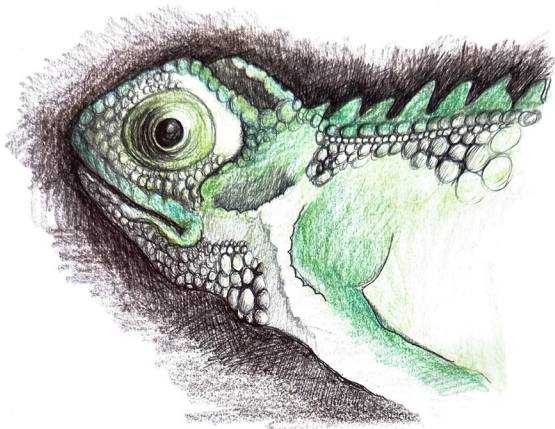
My approach focused on showing her what she was capable of by breaking complex styles into achievable steps, helping her move from imitation to developing her own voice within the genre. Along the way, the process became collaborative and playful, even drawing in family participation, reinforcing creativity as something shared and enjoyable.





Christmas Stage special for 9-1-1 Episode





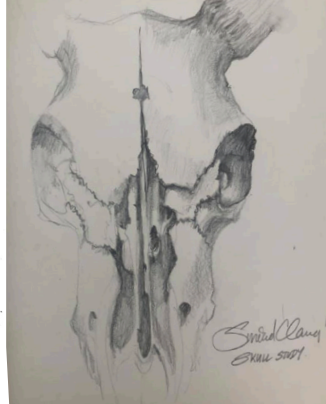
Chameleon studies



CHAMELON STUDY  
Sofia 08



Cow Skull Painting



Smiala  
Skull 2007

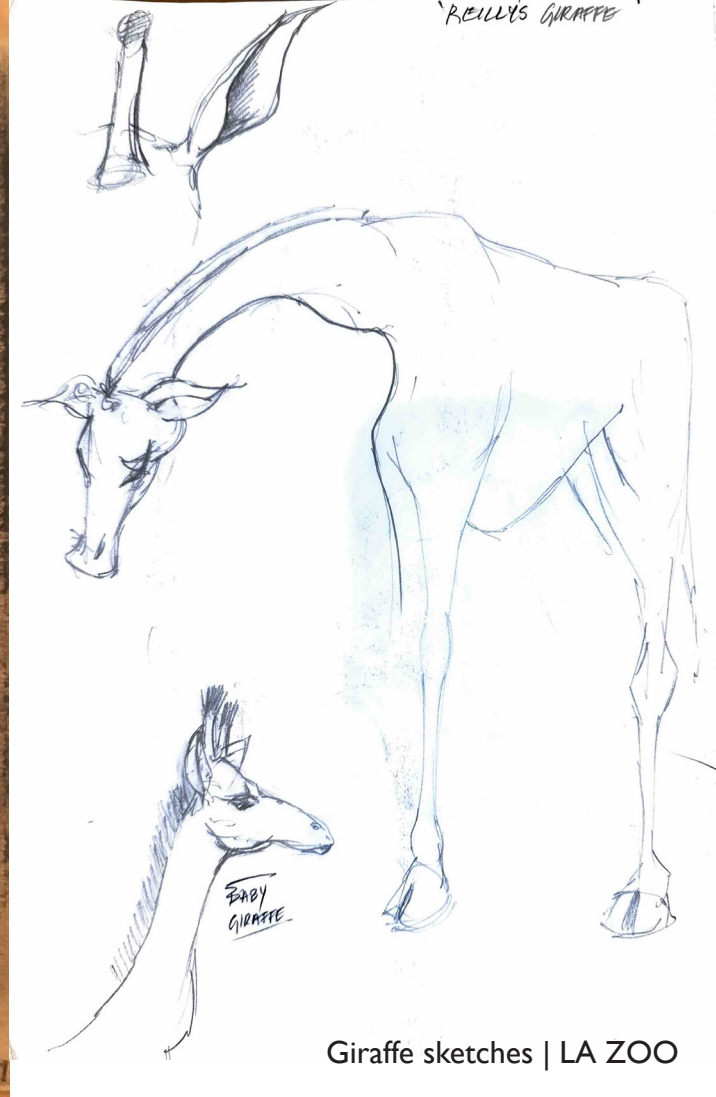


RICKS Cafe | Mural

# Sketches and Artwork



Charcoal & Chalk | Portrait



RELLY'S GIRAFFE

BABY  
GIRAFFE

Giraffe sketches | LA ZOO

Vasquez Rocks - Oil on Canvas 2024



Oil on Canvas - Cliffs of Moher I 2024



### Personal Work | Oils and Landscapes

I maintain an active studio practice in both oil painting. My paintings often explore landscape and atmosphere, ranging from the dramatic geology of Vasquez Rocks in California to the coastal light and shifting weather of the shores of Ireland, reflecting my personal connection to both places. This practices inform my approach to design, strengthening my sensitivity to color, composition, and the tactile qualities that help bring environments to life.



Oil on Canvas - Trasna na dTonnta (Across the Waves) 2025

